



FTG | FOREST



GOOD-VALUE, QUALITY AND FLEXIBLE FOREST EQUIPMENT FOR FORESTERS

Trailer FB50 & Loader FB42L



Key characteristics

Trailer FB50

Load capacity, kg	5 000 kg / 4m ³
Load length, m	2,9
Wheels	11.5/80-15.3 10PR
Brakes	On demand

Crane FB42L

Reach, m	4.2
Lift capacity at max. reach (net), kg	500
Slewing torque, kNm	4
Telescope	No
Valve block, type	FRV60/7 (2-lever/3coord)

FB50 & FB42L - Small but still strong

Together with a crane FB42L, this is smallest entry-level trailer designed for lighter handling and transportation of small wood & thinning material. It has central beam frame, solid crane base with foldable support legs, 2 movable bunks with 4 stakes and 11.5/80-15.3 10PR wheels. Crane FB42L equipped with linkage system for improved movement pattern.

Trailer FB70 & Loader FB51



Key characteristics

Trailer FB70

Load capacity, kg	7 000 kg / 7m ³
Load length, m	3,7
Wheels	11.5/80-15.3 10PR
Brakes	On demand

Crane FB51

Reach, m	5.1
Lift capacity at max. reach (net), kg	510
Telescope	no
Slewing torque, kNm	5
Valve block, type	FRV60/7 (2-lever/3coord)

Crane FB53T

Reach, m	5.3
Lift capacity at max. reach (net), kg	510
Slewing torque, kNm	8.5
Telescope	yes
Valve block, type	FRV60/8 (2-lever/3coord)

FB70 & FB51 - Flexible but still stable

Together with a crane FB51 or FB53T, this trailer is suitable for transporting pulpwood, small loads of timber and wood. It has central beam frame, stable crane base, strong gate, sturdy bogie, 11.5/80-15.3 10PR wheels, hydraulic frame-steering, telescopic support legs and 2 movable bunks with 4 stakes. Crane FB51 is rather strong and stable.



More information www.ftgforest.it

Trailer FB90 & Loader FB63T



Key characteristics	
Trailer FB90	
Load capacity, kg	9 000 kg / 7,4m ³
Load length, m	3,7 / 4,3 (with ext. support)
Wheels	400/60-15.5 14PR
Brakes	On demand
Crane FB51L	
Reach, m	5.1
Lift capacity at max. reach (net), kg	640
Slewing torque, kNm	8.5
Telescope	No
Valve block, type	FR60/7 (2-lever/3coord)
Crane FB63T	
Reach, m	6.3
Lift capacity at max. reach (net), kg	455
Slewing torque, kNm	8.5
Telescope	Yes
Valve block, type	FR60/8 (2-lever/3coord)

FB90 & FB63T - Workhorse in the forest

Together with a crane FB51L / FB63T, this trailer is suited for moderate loads of timber proven to be reliable and well-equipped machine. It has central beam frame, stable crane base, strong gate, sturdy bogie, 400/60-15.5 14PR wheels, hydraulic frame-steering, telescopic supports, movable stakes and etc. Crane FB63T equipped linkage system and telescopic arm for high functionality.

Trailer FB100 & Loader FB69T



Key characteristics

Trailer FB100

Load capacity, kg	10 000 kg / 9,4m ³
Load length, m	4,28 max.
Wheels	400/60-15.5 14PR
Brakes	On demand

Crane FB63T

Reach, m	6.3
Lift capacity at max. reach (net), kg	455
Slewing torque, kNm	8.5
Telescope	Yes
Valve block, type	FR60/8 (2-lever/3coord)

Crane FB69T

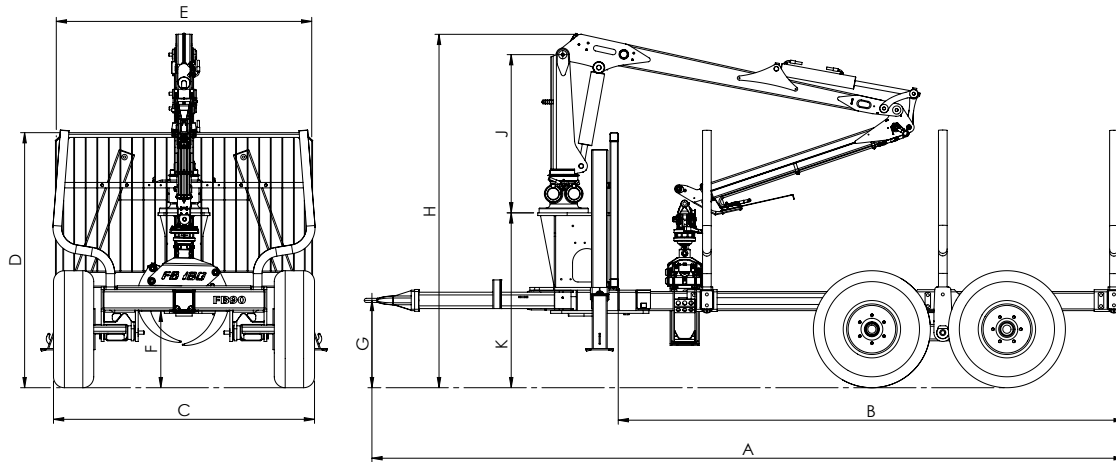
Reach, m	6.9
Lift capacity at max. reach (net), kg	490
Slewing torque, kNm	12
Telescope	Yes
Valve block, type	FR60/8 (2-lever/3coord)

FB100 & FB69T - The real heavy-duty forest trailer

Together with a crane FB69T, this heavy-duty forest trailer is designed for intensive use and most types of forestry transportation needs. It is equipped with 6 stakes, extra strong frame-structured bogie and gate, central beam frame and frame steering allocated behind the gate for excellent steerability and stability. Crane FB69T equipped linkage system between first and second boom together with a telescopic boom provides an improved movement pattern.

 More information www.ftgforest.it

Technical characteristics

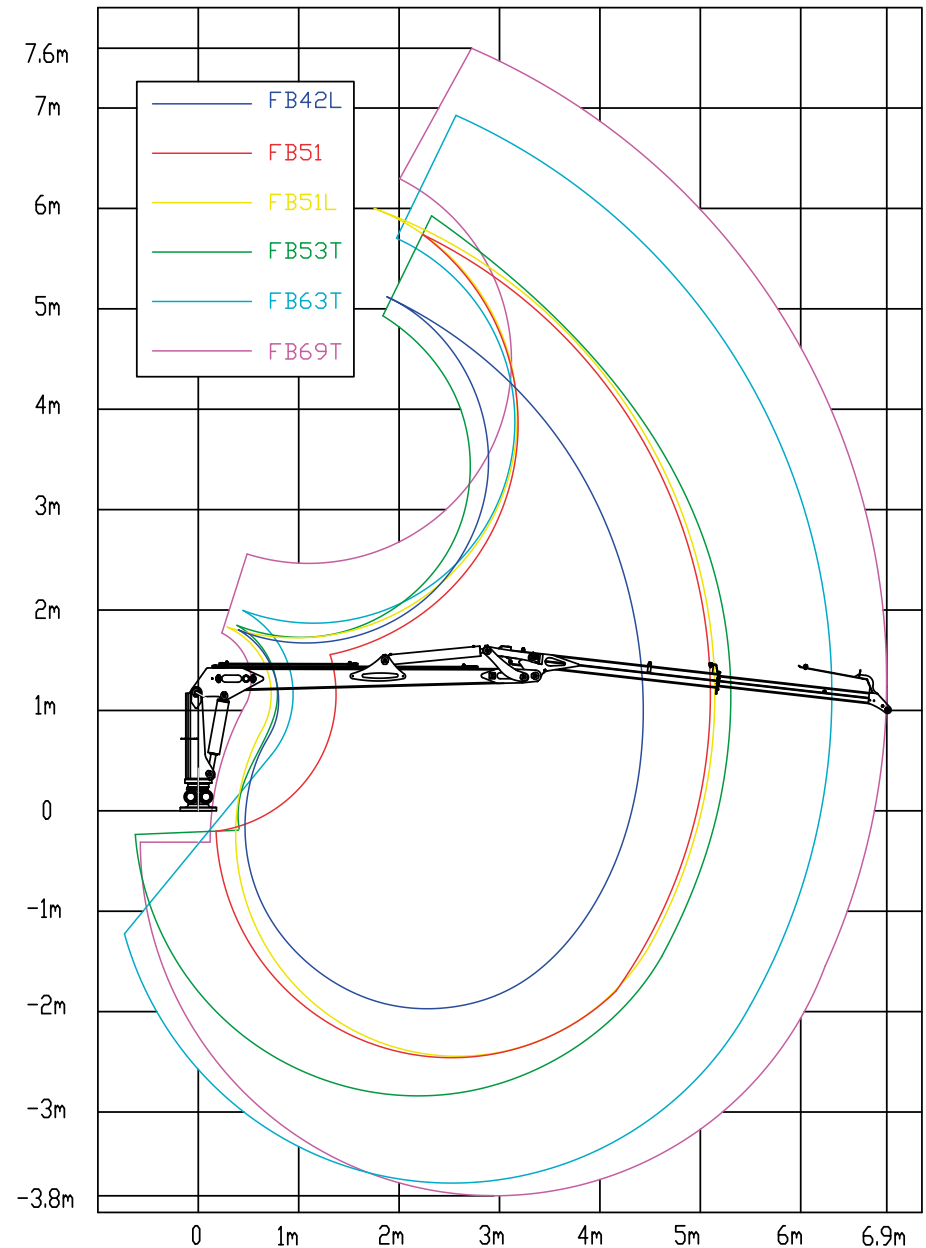


Trailer	Crane	Tires	A	B	C	D	E	F	G	H	J	K
FB50	FB42L	11,5/ 80-15,3	4105	2900	1780	1700	1685	520	540	2325	1060	1205
FB70	FB51		5510	3710	1920	1890	1880	550	625	2640	1160	1280
	FB53T	5510	3710	1920	1890	1880	550	625	2595	1160	1280	
FB90	FB51L	400/ 60-15.5	5710/ 6310	3710/ 4310	2030	2010	1920	555	650	2670	1160	1325
	FB63T		5710/ 6310	3710/ 4310	2030	2010	1920	555	650	2670	1160	1325
FB100	FB63T	500/ 50-17	6160	4280	2060	2150	1940	570	680	2660	1160	1310
	FB69T		6160	4280	2060	2150	1940	570	680	2860	1290	1310
	FB63T	6160	4280	2060	2190	1940	610	720	2700	1160	1350	
	FB69T	6160	4280	2060	2190	1940	610	720	2900	1290	1350	

The right crane for the right trailer

Trailer/Crane	FB42L	FB51	FB51L	FB53T	FB63T	FB69T
FB50	•					
FB70		•		•		
FB90			•	•	•	
FB100					•	•

Reach diagram

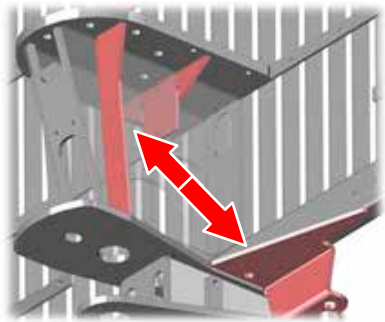


Technical characteristics

Crane characteristics (standard equipment)						
Parameter	FB42L	FB51	FB51L	FB53T	FB63T	FB69T
Reach, m	4,2	5,1	5,1	5,3	6,3	6,9
Linkage syst.	yes	no	yes	yes	yes	yes
Telescope	no	no	no	yes	yes	yes
Lift cap. (net), kg	500 (4,2m)	510 (5,1m)	640 (5,1m)	510 (5,3m)	455 (6,3m)	490 (6,9m)
Lift torque, kNm	20 (4m)	26 (5m)	33 (5m)	27 (5m)	31 (5m)	37 (6m)
Slew torque, kNm	4,0 (double cylinder)	5,0 (single cylinder)	8,5 (double cylinder)	8,5 (double cylinder)	8,5 (double cylinder)	12 (double cylinder)
Oil flow, L/min.	20-30	20-30	20-30	25-35	30-40	40-50
Weight (complete), kg	400	555	600	555	680	930
Rotator/Link, type	GR30/without pending brake	GR30/without pending brake	GR30/with pending brake	GR30/with pending brake	GR30/with pending brake	GR30/with pending brake
Grapple, type	FB120	FB160	FB160	FB160	FB160	FB190W
Working pressure, bar	185					

Trailer characteristics (standard equipment)				
Parameter	FB50	FB70	FB90	FB100
Load area, m ²	1,4	1,9	2,0	2,2
Load capacity, kg	5000	7000	9000	10000
Weight, kg	820	1300	1600	1700
Load length, m	2,9	3,7	3,7	4,28
Central beam, mm	120x120	140x140	160x160	160x160
Tires	11.5/80-15.3	11.5/80-15.3 / 400/60-15.5 (as option)	400/60-15.5	400/60-15.5 / 500/50x17 (as option)
Hydraulic frame steering	no	yes (single cylinder)	yes (double cylinder)	yes (double cylinder)
Hydraulic supports	yes/foldable	yes/telescopic	yes/telescopic	yes/telescopic
Bunks/Stakes	2/4	2/4	3/6	3/6

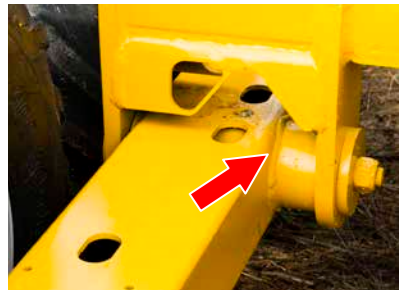
Strengths & Advantages - Trailers



✓ Reinforced gate design on FB90 trailer ensures trustworthy strength & reliability.



✓ "Easy-climbing" bogies - thanks to longer front v/s rear wheels-to-swing axle distance and with inclined bogie plates it is easier to overcome obstacles.



✓ Wide swing bushing on FB70/90 models ensures high durability & long service-free operation.



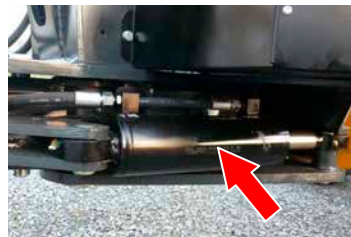
✓ Draw-bar fixation comes as standard. Parking support as option.



✓ Single beam frame design - flexible for twisting - best in forest.



✓ Special swing axle's design on FB100 trailer (in between the wheels) ensures high durability & long service-free operation, "easy-climbing" bogies make it easier to overcome obstacles, while extra strong frame-structured chassis is especially suited for a heavy-duty use.



✓ Trailers (except for FB50) are equipped with frame-steering - helps the trailer to "stay on track" in the forest. Hydraulic cylinders and hoses are well protected - this important as this is the most damage exposed point on the trailer.



✓ The level or refinement is high a FTG|Forest. Small details which make your everyday work easier.



✓ Strong, fully retractable telescopic support legs with safely protected inside cylinders, well routed hoses and mech. safety lock at closed position ensure perfect stability at work. You save distance compared to folding design.

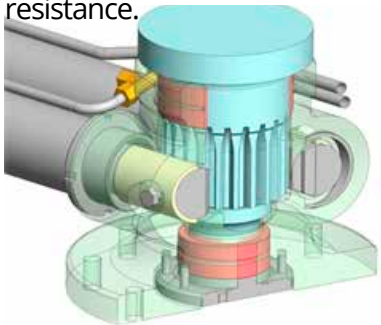


✓ Practical toolboxes on both sides available as optional extras to store any equipment you may need.

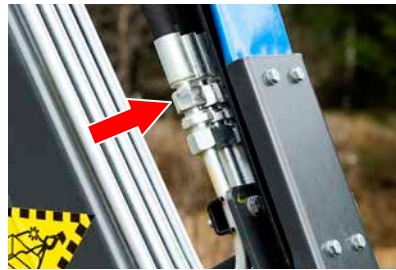
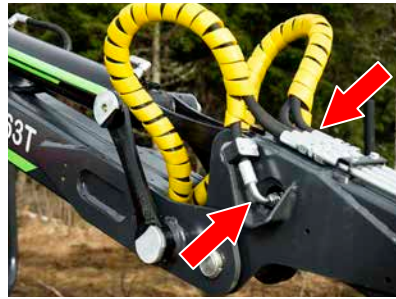
Strengths & Advantages - Cranes



✓ Steel hydraulic tubes on top of telescope arm instead of hoses & flat hose protection sleeve for an improved wear resistance.



✓ New type slew motor with die-cast iron housing, top bronze bushing & bottom ball bearing together with bigger mesh modulus ensures an increased torque, high durability & long fault-free operation.



✓ Service-friendly solutions for hose & wear parts change-out. Clean construction – all hoses are well protected in booms. Minimal risk of damages – no unnecessary stops in work. High reliability – bushings at all turning points.



✓ Link with pending brake comes as standard for cranes FB51L / FB53T / FB69T.



✓ Well protected lift cylinder thanks to smart “rod-down” positioning behind & below the gate.



✓ Main boom ready for winch fitting.



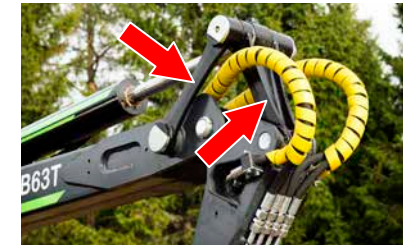
✓ Winch – an important tool for effective work – extends working range making it easy to collect single logs. Optional remote control system.



✓ Conically shaped arms made of “C” profiles of high-strength steels with less parts & welds ensure strength, optimal design & reduced weight.



✓ Well protected hoses for long run damage-free operation.



✓ Strong die-cast type link system between 1:st & 2:nd booms ensures better movement geometry resulting in higher work efficiency.



✓ “FB-series” grapples from high-strength steel ensures high durability & long fault-free operation.

Accessories - Grapples

We offer a wide range of timber and bucket type grapples to meet various needs. Grapples are produced from high quality and strength materials to ensure durability and reliability you can rely on. Low weight that ensures max. payloads during Your daily operations.



Grapple FB120



Grapple FB160



Grapple FB190



Grapple FB260

Parameter / Model	FB120	FB160	FB190	FB190W	KG190	FB260	KG180S
Max. grip area, m ²	0,12	0,16	0,19	0,19	0,20	0,26	-
Max. grip width, mm	760	1010	1200	1200	1050	1350	-
Min. grip , mm	40	50	50	50	70	50	-
Jaw force, kN	6,9	7,5	9	9	N/A	12,5	N/A
Height, mm	360	400	420	420	740	500	700
Width, mm	215	215	220	295	295	300	340
Hydraulic cylinder, mm	Ø60x25	Ø70x30	Ø73x32	Ø73x32	Ø73x32	Ø80x40	Ø73x32
Weight, kg	40	55	68	81	75	115	110
Material type	Domex650	Domex650	Domex650	Domex650	Domex650	Domex650	S355
Coupling bushing, mm	Ø50	Ø50	Ø50/60	Ø50/60	Ø50/60	Flange/Adaptor	Ø50



Grapple KG180S



Add-on bucket kit B190

Add-on Bucket Kit (grapple is not included)	B160 (fits FB160)	B190 (fits FB190)	B190W (fits FB190)	B260 (fits FB260)
Bucket's volume, L	110	120	120	150
Bucket's height, mm	740	780	780	980
Bucket's width, mm	580	600	600	750
Bucket's weight, kg	33	35	35	45

Accessories - Winches, On-board hydraulic system & 3-Point Attachments

✓ Winch is an important tool for effective work – it extends working range making it easy to collect single logs. We offer 2 models with optional remote control system. Standard Kit contains winch MV1410, pull wire, pulley to be mounted on a crane boom, manual control valve with mounting plate and hydraulic hoses.



✓ Winch set with optional remote control system



✓ On-board hydraulic System

✓ Additional hydraulic system is used when tractor's oil flow is insufficient for desired crane operation speed at idle PTO RPM. Set includes hydraulic pump with a gear box (male/female type coupling for selection) and adapter plate, oil tank with return line filter, oil level and temperature gauge as well as hydraulic hoses. Tank's nominal capacity - 50 L.

Characteristics		
Parameter / Model	MV1410	MV1810
Pull force, kp	1400	1800
Pull speed, m/s	0,45	0,35
Pull wire length, m	35	30
Pull wire diameter, mm	Ø6	Ø8
Wire-Polyass	yes	yes
Manual control	yes	yes
Radio control	extra	extra

Data corresponds pressure - 175 bar, oil flow - 40 l/min.



✓ 3-Point Attachment

✓ 3-Point Free-Link Attachment stand is used to hitch forestry cranes to agricultural wheel tractors. It complies with ISO+370-1:1994 standard and has telescopic hydraulic supports for reliable stabilization. Available in 2 size models corresponding to hitching equipment size category #2. Fits cranes: FB51; FB51L; FB53T; FB63T.

Valve blocks, rotators and other accessories you can find in our web www.ftgforest.it

ABOUT US

FTG Baltic UAB

Is a manufacturing company, founded in 1994 and situated in Vilnius. The company is one of the first producers of forestry equipment in the Baltic States and particularly in Lithuania. Due to a long term work in this field, we have successfully combined Swedish know-how, experience and quality with competitive production possibilities in Lithuania. Today we offer forest trailers, cranes, road graders, grapples, winches and other accessories under well-known brand names such as KÄLLEFALL and FOREST. All produced at a state of the art production site. Materials and components chosen to meet the high customer demands together with skilled personnel with a focus on quality are two other cornerstones for assured product quality. Today, FTG Baltic UAB is one of Europe's leading manufacturers of forestry equipment, providing good-value, quality and flexible equipment for foresters. Most of our products are exported to European & Scandinavian markets where they contribute to safe and efficient forestry.



FTG Baltic UAB | Dūmų st. 3, LT-11119 Vilnius, Lithuania
Phone: +370 5 246 23 20 | Fax.: +370 5 246 23 19
E-mail: info@ftgbaltic.lt | www.ftgforest.lt